



Spring Quarterly 2013



SUITE SURRENDER OFFERS BATTLE OF DIVAS!

The Stone Arch Players' third offering of the 2012-2013 season is *SUITE SURRENDER* and is directed by veteran Alan Peoples. *SUITE SURRENDER* concerns the battle royal between two larger-than-life Hollywood divas over the hotel suite both want.

Starring as the two battling divas are Phyllis Johnson and Anita Rishel. Both of these very experienced ladies have been Stone Arch favorites for years and their casting ensures that *SUITE SURRENDER* will be a night of hilarity and hi-jinks.

Two of our Juniata County ladies, new momma Susan Turns, and educator Teresa Williams return as Dora del Rio and Mrs. Osgood. Both of Stone Arch's favorite sexy action hero/leading men, Rob Burns and Michael Cramer will be on hand, along with two new members! We welcome Matt Loewen in the role of Otis and Julie Ufema as Murphy. Director Peoples himself completes the line-up in a pivotal role. A terrific and exciting cast made up of experienced old hands and two new friends! Chris Whiteford, everyone's favorite stage manager both here and at the State College Community Theatre, will stage manage.

SUITE SURRENDER opens May 3, and continues the 4, 10, 11, 12, 17, 18, and 19. All evening performances are at eight. Sunday matinees being at two. Call 717-248-2224, 7:00 p.m. to 9:00 p.m. Weeknights beginning April 29 to reserve your tickets! More information can be found at www.stonearchplayers.com and at Stone Arch Players on facebook!



STONE ARCH PLAYERS TAKE STATE COLLEGE COMMUNITY THEATRE BY STORM!

An exciting season is approaching for the State College Community Theatre this summer. The group will perform in the air-conditioned downtown State College comfort of the refurbished State Theatre for its first full season. And that season is filled with a bevy of Stone Archers!

Our Forty-Sixth Anniversary Season! 1967-2013 at the Theatre In The Park

"SUITE SURRENDER "

By Michael McKeever

Farce, Directed by Alan Peoples

Performances: 8:00 p.m. Fridays and Saturdays

May 3, 4, 10, 11, 17, 18

2:00 p.m. Sundays, May 12 & 19

Stone Arch Box Office: 717-248-2224

Newsletter Submissions: fifthartpig@hotmail.com

Color versions of the newsletter photos

are available on our web site:

www.stonearchplayers.com

Look for us on

facebook

Directing the final show of the summer, the Pulitzer-Prize winning *AUGUST: OSAGE COUNTY* is SAP founder Michael Knarr. This is Knarr's third summer directing for the organization and he has assembled his usual creative team. Nate Smith is assistant director, with Chris Whiteford as stage manager, and Ryne Knarr as assistant stage manager. Last year Smith helped complete the set for Knarr's Agatha Christie thriller starring Charlie Wilson, but this year is promoted to director, assisting Knarr.

The meaty and challenging role of Violet, the clan's mother, in *AUGUST: OSAGE COUNTY* will be performed by Melissa Brannen. And her son-in-law, Bill Fordham, will be hubby Chris Brannen. With SAP's favorite power couple in lead roles and four SAPPers behind the set, how can this play miss?

But we're not finished yet. SCCT's first show of the season is *BORN YESTERDAY*, a comedy we presented for the second time in our history last fall. It stars audience favorite Charlie Wilson as Senator Norval Hedges and Jean Mank as Mrs. Hedges, roles played for us by Dick Jones and Barb Stahl. Dick Jones, coincidentally, is also in the production, but this time as the Assistant Manager of the swank hotel.

Charlie Wilson also does an even more dramatic turn as Francis Nurse later in the summer in *THE CRUCIBLE*, a drama about the Salem witch trials. Congratulations on being double-cast, Charlie!

At the end of this seasonal article, we usually congratulate our summer Barn workers. For the first time, we congratulate State College Community Theatre on their new downtown venue featuring air-conditioning and indoor toilets, and also congratulate all of our summer State Theatre workers! Have a great summer, all!

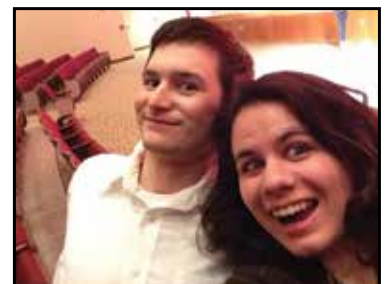
Information about the State College Community Theatre's summer season at the State Theatre can be found online at www.scctonline.org.

ALICE IN WONDERLAND

Two of our young members, Colton Fleming and Rodney Patterson, recently appeared in their senior class play *ALICE IN WONDERLAND*. The show was staged at the Mifflin County High School at the end of February and was directed by Amanda Baker. Colton played the

Cheshire Cat and Rodney was the Mock Turtle. Previously, these young men played the bellboys and other roles in our fall production of *BORN YESTERDAY*. Colton is pictured in full makeup with a cast mate, and Rodney poses with Rachel Jones after the performance.

Congratulations, fellows!



Nonprofit Org.
 U.S. POSTAGE
PAID
 Permit No. 48
 Lewistown, PA

RETURN SERVICE REQUESTED

Stone Arch Players
 P.O. Box 604
 Lewistown, PA 17044

GUEST EDITOR

We had a computer problem last season and our normal editor was unable to write the newsletter. Ellen Cramer graciously stepped up to the bat and took over the operation for the Winter Edition and did a stupendous job! Thank you, Ellen, for all your hard work!



HORSEWOMAN DESTINY ZEIDERS

wowed audiences as the voluptuous French tart in winter's *WHO'S IN BED WITH THE BUTLER*, our last hit!



REGINA BRANNEN'S GOT TALENT

Regina Brannen will perform in this year's "Happy Valley's Got Talent" show April seventh at seven o'clock at the State Theatre. This annual talent show is a benefit for the Tides Program. Tickets can be purchased on the State Theatre's website.

www.thestatetheatre.org
 Congratulations, Regina!



NEW MOMMA

Susan Turns will be one of the stars of the upcoming *SUITE SURRENDER* this May at the Theatre In The Park!

GEORGE BAUMER IN WINNING DRAMA

George Baumer is starring in the heart-wrenching drama *ELEPHANT'S GRAVEYARD*, written by George Bryant, which is presented with two comic curtain-raisers *MRS. SORKEN* and *POSTCARDS FROM A DEAD DOG* on March 20th, April 12th and 13th. The show is presented by Things Unseen Theatre and the Altoona Community Theatre and curtain times are 8:00 o'clock. The show was entered in the PACT Festival in Ridley Park, Pa., and came in second, so the next step for this talented cast is the Regionals in Rome N.Y. In April. George plays the marshal of Erwin, Tennessee in 1916. Congratulations to the most popular man in community theater!



Stone Arch Players Seat Drive

SAP has purchased new seats for our guests at Theatre-in-the-Park. You can show your support, and help defray the costs, by sponsoring one of the new seats for \$150 per seat. In addition to a small engraved plate affixed to a seat, you will also be honored as a "Silver Legend" on a special plaque in the theatre lobby. Or, for \$50, you can be listed as a "Gold Star."

Just return this form, along with check made payable to Stone Arch Players, to any usher or ticket seller at any performance. Or, mail to: Stone Arch Players, PO Box 604, Lewistown, PA 17044.

I wish to contribute to the new theatre seats.
 SILVER LEGEND: \$150 x # of seats _____ =total \$ _____
 GOLD STAR: \$50
 Name as I wish it to appear _____

Name _____
 Address _____
 C/S/Z _____
 Phone _____
 Email _____



FORTY-FIFTH ANNIVERSARY ITEMS

The Stone Arch Players are celebrating their Forty-Fifth Anniversary this year, and are offering special items for sale to commemorate the occasion. Anniversary T Shirts are \$15.00, Sweat Shirts are \$20.00, Tote Bags are \$3.00 each, or two for \$5.00, and Buttons are only \$1.00!

Items are available before each show and during intermission.