



WINTER QUARTERLY 2012



PHYLLIS JOHNSON INVITES YOU TO "DROP DEAD"!

No, our beloved Veep hasn't gone bonkers--the second show of our Anniversary Season is entitled DROP DEAD. And you WILL drop dead! With laughter!

DROP DEAD is the story of an incompetent acting troupe trying to perform a murder mystery. What the group doesn't count on, though, is being murdered in actuality, one by one, during the rehearsals!

DROP DEAD is the latest offering from SAP's Vice President Johnson, and features an all star cast--"My Dream Team," states the director. Eric Kress is Alabama Miller, Pete Herman is Brent Reynolds and Alexander Barrington, Destiny Zeiders is Candy Apples and Penelope, Mike Cramer is Chaz Looney and Drools, Pat McKnight is Constance Crawford and Lady Barrington, Brad Williams is Dick Shalit and Inspector Mounds, Anita Rishel is Mona Monet and Bette Barrington, Rachel Jones is Phyllis, Charlie Wilson is Sol Weisenheimer, and Alan Peoples is Victor Le Pewe. Johnson is assisted by assistant director Susan Turns and stage manager Ellen Cramer.

DROP DEAD is a hilarious behind-the-scenes look at theater and all the inflated egos that make it up, including a bigoted producer, a senile leading lady far past her prime, a crazed author, a gorgeous sex kitten, and an arrogant leading man. Add a few more well known theater types including two over-the-top homosexuals, and you've got a comedic recipe guaranteed to tickle funny bones to the point of belly laughs!

WHO is the murderer? WHY is (s)he killing actors? Who will survive DROP DEAD? You can find out by attending DROP DEAD, running at the Theatre In The Park, February 24th to March 11th. Prepare to laugh til it hurts!

CHARLIE STARS IN DOCUMENTARY

On October 21st, Charlie and Carolyn Wilson attended the Tallgrass Film Festival in Wichita, Kansas, as the guests of Tumbleweed Entertainment, the producers of the documentary



SPEAK. The 94 minute film addresses the fear of public speaking by following the ten finalists in the 2008 World Championship of Public Speaking. As one of those finalists, Charlie has his fifteen minutes of fame in the film, and so does Carolyn.

Charlie says, "The audiences and actors of Stone Arch that I met and befriended during my appearances at the Theatre In The Park helped give me the confidence to compete in the contest cycle, ending with my speech before an audience of 1800 as one of the ten finalists remaining from the 35,000 who began the cycle."

Very impressive, Mr. Wilson!

Our Forty-Fifth Anniversary Season! 1967-2012 at the Theatre In The Park

"DROP DEAD"

By Billy Van Zandt & Jane Milmore

A Farce, Directed by Phyllis Johnson

Performances: 8:00 p.m. Fridays and Saturdays

February 24, 25, March 2,3,9 and 10

2:00 p.m. Sundays, March 4 and 11

"THE PSYCHIC"

By Sam Bobrick

Comedy - Mystery, Directed by Alan Peoples

Performances: 8:00 p.m. Fridays and Saturdays

May 4, 5, 11, 12, 18 and 19

2:00 p.m. Sundays, May 13 and 20

Stone Arch Box Office: 717-248-2224

Newsletter Submissions: fifthartpig@hotmail.com

Color versions of the newsletter photos

are available on our web site:

www.stonearchplayers.com

Look for us on 



Michelle Miller-Day
and George Baumer
co-star in
ON GOLDEN POND.

"ON GOLDEN POND" at Mishler Theatre

George Baumer, the most popular man in community theater, will next play the role of the patriarch Norman in ON GOLDEN POND at the Altoona Community Theatre's Mishler Theatre. The play runs February 16th, 17th, and 18th at 8:00 p.m. and on February 19th at 2:00 p.m. When asked how he feels about this particular part, Baumer states, "A role I have always wanted to play."

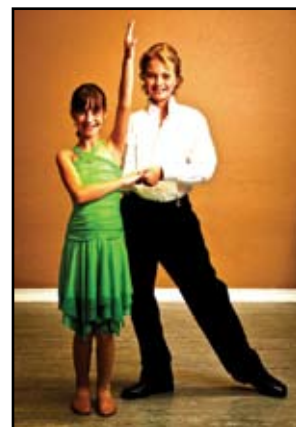
The Mishler box office at 814-994-9434 is open Tuesday through Friday, 11:30 a.m. to 5:30 p.m. and also re-opens one hour before curtain on performance nights for sales of that performance only. Congratulations, George!

SINGIN' IN THE RAIN

Second Gen Stone Archer Ian Blake will appear as Young Don in the Georgetown Palace Theatre's production of SINGING IN THE RAIN, in Texas. The show opens February 24th and runs through the end of March.

In January, he began shooting THE QUIET GIRL'S GUIDE, a short film that follows a solitary woman's struggle to overcome the childhood bullying that has stunted her adult life. The film is being shot as a 22 minute television pilot, and also as a 10 minute short that will be submitted to film festivals.

*Congratulations to Ian
and his proud mom, Joan Knepp Blake!*



Stone Arch Players Seat Drive

SAP has purchased new seats for our guests at Theatre-in-the-Park. You can show your support, and help defray the costs, by sponsoring one of the new seats for \$150 per seat. In addition to a small engraved plate affixed to a seat, you will also be honored as a "Silver Legend" on a special plaque in the theatre lobby. Or, for \$50, you can be listed as a "Gold Star."

Just return this form, along with check made payable to Stone Arch Players, to any usher or ticket seller at any performance. Or, mail to: Stone Arch Players, PO Box 604, Lewistown, PA 17044.

I wish to contribute to the new theatre seats.

SILVER LEGEND: \$150 x

of seats _____ =total \$ _____

GOLD STAR: \$50

Name as I wish it to appear _____

Name _____

Address _____

C/S/Z _____

Phone _____

Email _____



BOAL BARN TRIUMPH

Last summer SAP founding member Mike Knarr directed his first show for the State College Community Theatre at the Boal Barn. LEADING LADIES was a rousing success and featured not only Knarr as director, but also Eric Kress in a plum role, Chris Whiteford in a cameo part, and Ryne Knarr as stagehand.

It's great to have cross-pollination between our two groups! Congratulations to these four Stone Archers!

RAGGED ISLE



Beth Mierly Saufler, Lewistown native, and star of SAP in the 1980s, now lives in Bath, Maine, but is still very active in theater. She appears with several groups in her local area, but also is one of the stars of a Web TV show!

RAGGED ISLE is a Web series that can be found on YouTube. The thrilling mystery is in its second season and features Saufler in a plum role. *Congratulations, Beth!*

RHIANNON McCLINTOCK UPDATE

Stone Arch Player Rhiannon McClintock, who recently moved to New York, participated in a workshop production of two one act plays at the Elmwood Playhouse in Nyack, New York, starring as Viola in THE MORPHEUS QUARTET and Cindy in SLOP-CULTURE.

She is also involved with the Staged Reading Series at the Center Stage Playhouse in the Bronx, is working box-office at The Brick Theatre, and ushering with The Gallery Players, both in Brooklyn, and has served as a festival volunteer for the All For One Theater Festival and The Under The Radar Festival, both in Manhattan.

She tells us, "I'm keeping busy behind the scenes, but hope to be on stage soon!"

Continued success, Rhiannon!

CHRISTMAS PARADE



The Lewistown Kiwanis Christmas Parade was held in December and featured Stone Archers Ellen and Mike Cramer and Beth Aumiller as the three judges.

Merry Christmas, Happy Hanukkah, Joyous Kwanzaa, Feliz Navidad, and a Wonderful Winter Solstice to all our friends and patrons!



SNOW QUEEN

On November nineteenth and twentieth of last year, the Pennsylvania Centre Orchestra under the direction of Douglas Meyer, presented Hans Christian Andersen's THE SNOW QUEEN with the Hudson Vagabonds Puppets. The first performance

was in the State College Area High School in State College and the second performance was in the Mifflin County High School Auditorium in Lewistown.

Stone Arch favorite Mike Crone was the narrator for both performances and did his usual superb job. "This story is about the Snow Queen who lived in her ice palace far away to the north. On winter nights it was her habit to sweep down on the cities and villages and freeze them in snow and ice. Wherever the snowflakes swarm most thickly, there she flies. She is beautiful and grand, but ice all the way through, and yet she is alive."--This passage began the production as a twelve foot tall Snow Queen glided across the stage escorted by a group of flying geese.

Congratulations, Mike, on another great performance!

NEW GILBERT AND SULLIVAN PLAY AT THE STATE THEATER

A new play by Sterling Sax using Gilbert and Sullivan musical numbers will be produced for the first time this spring. THE ROYAL GILBERTS is the story of a gaggle of aging musical comedy stars who are about to be evicted from their Home, but who are given one last chance to perform the Gilbert and Sullivan songs that are so beloved to them. Actors include Susan Kleit, John Koch, Dave Saxe, Rod Egan, Sally Best, Laura Ann Saxe, Mercer Bristow, Alex Principe, and Chris Hirsch.

Three Stone Arch Players complete the cast: Kristine Allen (TO FORGIVE, DIVINE), Melissa Brannen, and Bill Daup.

The show will run May 25th and 26th at the State Theater on College Avenue in State College, and is produced by the Nittany Theater Company. Tickets are available in March, at 814-272-0606.



The wedding of Ms. Joan Marie Wilson of Milroy and Ronald James Patterson of Lewistown will take place on Saturday, July 14th, at the Brookmere Winery.



Jill Harbst Boulanger and Meredith Snook celebrated Jilly's birthday with Emile Boulanger at JP Edward's last year.



FORTY FIFTH ANNIVERSARY ITEMS

The Stone Arch Players are celebrating their Forty Fifth Anniversary this year, and are offering special items for sale to commemorate the occasion. Anniversary T Shirts are \$15.00, Sweat Shirts are \$20.00, Tote Bags are \$3.00 each, or two for \$5.00, and Buttons are only \$1.00!

Items are available before each show and during intermission.



FRONT

BACK

On Cue is printed by Impressions Printing of Mifflintown, PA.